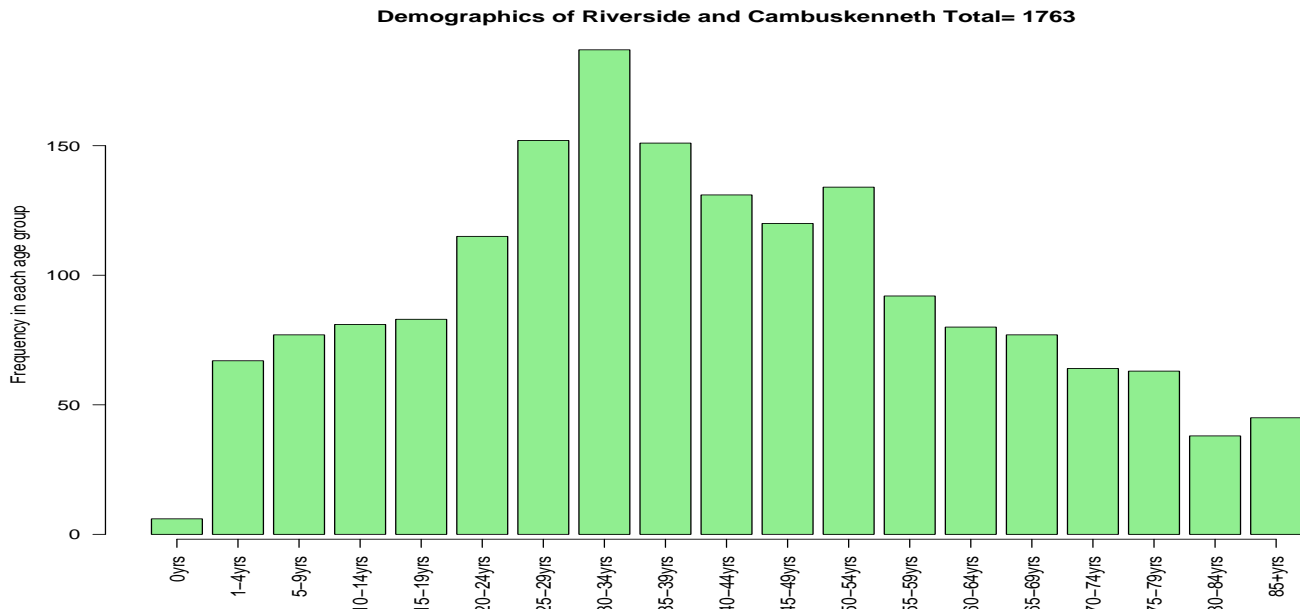


Health Factsheet for Riverside and Cambuskenneth

1 Demographics: Source CHI 15th May 2001



2 Mortality: Source GRO for Scotland

Comparison between deaths in Riverside and Cambuskenneth from 1996-2000 with deaths in 1999 in Scotland and Stirling District. *SMR* - ratio of directly standardised death rates for both sexes and *under 75* years of age using the European standard population. *SYOLL* is the ratio of years of life lost per 100,000 population using 75 years as the cut off compared again to Scotland and Stirling. In each case 100 is the baseline, with values of greater than 100 indicating a higher mortality than the base population.

	<i>SMR</i> _{Scot}	<i>SMR</i> _{Stir}	<i>SYOLL</i> _{Scot}	<i>SYOLL</i> _{Stir}	Deaths
All Causes	56	69	48	59	25
All Cancer	105	110	99	106	15
Isch. Heart Disease	33	50	58	91	3
Stroke	0	0	0	0	0

3 Morbidity: Source SMR 01

Comparison between inpatient/day case discharge rates in Riverside and Cambuskenneth from 1996-2000 with discharge rates in 1999 in Scotland and Stirling District. *SMR* - ratio of directly standardised discharge rates for both sexes and *all* years of age using the European standard population. In each case 100 is the baseline, with values of greater than 100 indicating a higher discharge rate than the base population.

	<i>SMR</i> _{Scot}	<i>SMR</i> _{Stir}	Discharges
All Causes	93	94	1439
Ischaemic Heart Disease	82	75	65
Stroke	88	114	28
Respiratory	109	116	86
Asthma	113	99	8
Poisoning	86	90	22
Fractures	96	97	42